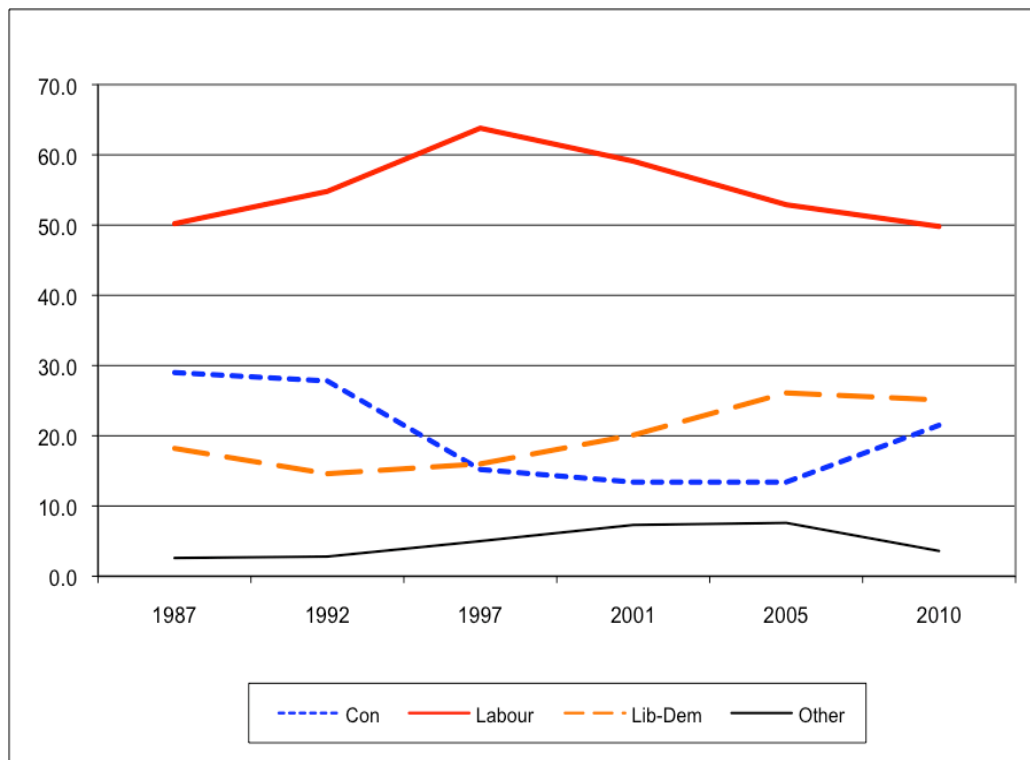


Vauxhall Constituency General Elections: Votes

This chart shows the percentages of those who actually went to the polls who supported the various candidates. Vauxhall is clearly a very safe Labour seat.



57.7 % of the electorate voted in 2010, the highest turnout since 1992's 62.3%.

Martin Stanley
martin.stanley@civilservant.org.uk